



Protecting Tomorrow–Today.™

Online RMS

Version 11.19.0

Product Release Bulletin (PRB)

05 August 2025

REVISION HISTORY

Revised By	Revision Date	Version	Notes
B. Chapman	05 August 2025	1.0	Release to Production

TABLE OF CONTENTS

Revision History.....	1
Introduction.....	2
Product Requirements	3
Release Milestones	4
Release Announcement	5
New Features & Enhancements	6
ONLINE RMS 11.19.0 HIGHLIGHTS	6
<i>Event Map – Replaces “Incident Mapping”</i>	6
<i>Viewing Supplements – Usability Improvement</i>	15
<i>Log Case Investigative Case Hours Quick Link</i>	16
<i>Expunge Narrative Redaction Enhancements</i>	17
<i>Custom Forms Security</i>	18
Appendix: 11.19.0 Product Change Notice (PCN) – Detailed JIRA Listing	19
TABLE A: RELEASE ENHANCEMENTS AND PRODUCT SOFTWARE ISSUE RESOLUTIONS...	19
Appendix: Service Commitments	67

INTRODUCTION

This document provides an overview of the software changes delivered in the 11.19.0 release of the Online RMS product and will assist with release preparation activities including:

- Internal staff training
- Customer release training
- Customer release notes
- Release announcement and promotion
- Online help and eLearning updates
- Updates to web site product information and product collateral

PRODUCT REQUIREMENTS

For best performance and security, we recommend a computer, laptop, or tablet purchased within the last 3 years; running an industry common web browser that is actively supported and updated to the most recent web standards by the browser manufacturer and connecting to the internet by DSL, Cable, or cellular (4G or higher).

Your browser must support the TLS 1.2 security protocol or higher. Browsers running the TLS 1.0/1.1 security protocols have known security vulnerabilities and are no longer supported by Caliber Online RMS. Please make sure your web browser has TLS 1.2 or higher enabled.

IMPORTANT NOTICE FOR ONLINE RMS AGENCIES USING INTERNET EXPLORER (IE)

On August 17, 2021, Microsoft announced that Internet Explorer 11 will no longer work optimally with Microsoft 365 services. Microsoft ended support for the Internet Explorer 11 desktop application for certain versions of Windows 10 on June 15, 2022. Internet Explorer no longer supports new web standards used by modern applications. See Microsoft's website [announcement page](#) for more information.

Caliber strongly recommends that you use an industry popular web browser that is supported and updated to the most recent web standards. Caliber is unable to provide support and issue resolutions on web browsers that are not supported and maintained to the most recent web standards.

RELEASE MILESTONES

The following table contains the high-level release milestones for the Online RMS 11.19.0 release.

End Date	Milestone
25 Mar 2025	11.19.0 Sprint 1 Starts
08 Apr 2025	11.19.0 Sprint 1 Ends / Sprint 2 Starts
22 Apr 2025	11.19.0 Sprint 2 Ends / Sprint 3 Starts
06 May 2025	11.19.0 Sprint 3 Ends / Sprint 4 Starts
20 May 2025	11.19.0 Sprint 4 Ends / Sprint 5 Starts
03 Jun 2025	11.19.0 Sprint 5 Ends / Sprint 6 Starts
17 Jun 2025	11.19.0 Sprint 6 Ends / Sprint 7 Starts
01 Jul 2025	11.19.0 Sprint 7 Ends / Sprint 8 Starts (Stabilization Starts)
15 Jul 2025	11.19.0 Sprint 8 Ends / Sprint 9 (Stabilization Continues)
23 Jul 2025	11.19.0 RTO (Release to Training / Operations)
31 Jul 2025	11.19.0 Stabilization Ends / Code Lock
05 Aug 2025	11.19.0 Release Available

RELEASE ANNOUNCEMENT

Online RMS was upgraded to 11.19.0 on Tuesday, **August 5, 2025**, at **1:00 a.m.** (Eastern).

Your opinion is important to us. We incorporate user feedback into each Online release to ensure that you get the best product for your job. **Online RMS 11.19.0** includes enhancements and improvements that touch over 30 **RMS components**, including **Incident Report Writing, Field Arrest, Master Addresses, Held Property/Evidence, Citations, Civil Process, Warrants, Custom Forms, Personnel/Training, Master People, Calls For Service, Criminal Complaints, Community Reporting, Fleet Management, Tow Impound, SmartSearch, Mapping, User Admin, NIBRS State Submission Compliancy, Application Interfaces (APIs), and Security upgrades**; among many other product enhancements, integration improvements, and issue resolutions. Customer obligations, operational efficiency improvements, data entry simplification, and user friendliness were all major considerations in the development of this edition.

Below are a few release highlights available in Online RMS 11.19.0. More information on features and functionalities in the 11.19.0 release is available under the Online RMS Help menu by reviewing the Table of Contents (TOC) section and by clicking on the Product Release Bulletin. Click Help > Online Help or simply click [HERE](#) to read more.

We hope you share our enthusiasm for the production release of Online RMS 11.19.0. Please contact us by email at rms@caliberpublicsafety.com if you have any questions about the release.

Our Very Best,

Caliber Public Safety

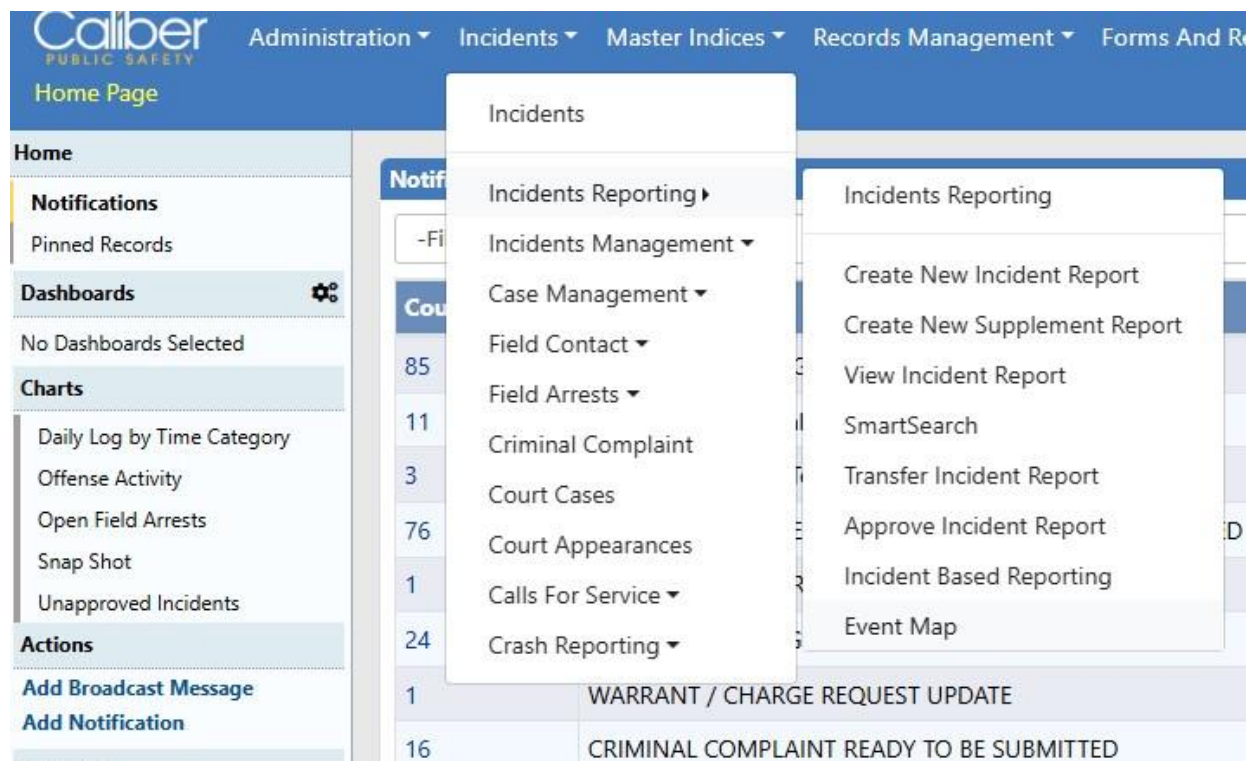
NEW FEATURES & ENHANCEMENTS

Many new improvements have been included in Online RMS 11.19.0, based on customer feedback, contractual commitments, and revisions to Public Safety State and Federal standards. The overall goal of this version was to improve operational efficiencies, data management, and ease of use. For additional information on the enhancements and functionality described in this release bulletin, please consult the **Online RMS User** and **Admin Help documentation**.

ONLINE RMS 11.19.0 HIGHLIGHTS

Event Map – Replaces “Incident Mapping”

Incident Mapping, is no longer a menu option. Users may now look for the Event Map in the same menu group.



The Event Map gives the user a means to display events filtered for a number of different values (including date and event type), displayed in a geographic area

defined by the user or agency (the "shape"). Your agency may have specific shapes defined that can be selected from the menu

Entering Queries

To display events on the map, you must enter a query and define a shape. Selecting the button will open the Query Wizard to step the user through the components of the query

Map Query Creation Wizard

Close

Previous

Next

Finish

1 Times

2 Agencies

3 Draw Mode

4 Event Types

5 People

6 Officers

Enter a Date Range, or Select a Pre-Defined Range Below.

DATE/TIME FROM

DATE/TIME TO

OR SELECT A RANGE

-Select-

Close

Previous

Next

Finish

The components of your query can be entered in the side menu as well. Enter the date range (both "From" and "To") to begin.

Query Wizard

Date & Times

DATE/TIME FROM

07/30/2025 0929

DATE/TIME TO

07/31/2025 0929

OR SELECT A RANGE

-Select-


You can also select from pre-defined date ranges from the pull-down menu.

The screenshot shows the 'Query Wizard' interface. Under the 'Date & Times' section, there are two input fields: 'DATE/TIME FROM' with the value '07/30/2025 0929' and 'DATE/TIME TO' with the value '07/31/2025 0929'. Below these is a section titled 'OR SELECT A RANGE' which contains a pull-down menu. The menu is currently open, showing the following options: '-Select-', '-Select-', 'Last 24 Hours', 'Week To Date', 'Month To Date', 'Last Month', and 'Year To Date'.

The Event Map can display various , Event Types including Active Warrants, Calls for Service, Citations, Court Papers, Crash Reporting, Field Arrests, Field Contacts, Incidents, Recovered Properties, and Recovered vehicles. The type displayed depends on the user's query selections.

Event Types

-  ☐ Active Warrants
-  ☐ Calls for Service
- ☐ Citations
- ☐ Court Papers
- ☐ Crash Reporting
-  ☐ Field Arrests
- ☐ Field Contacts
-  ☒ Incidents
- ☐ Recovered Properties
- ☐ Recovered Vehicles

Click the gear icon  for the applicable to filter for additional criteria specific to the event type. For example, the additional filter criteria for Active Warrants is shown here:

Active Warrants


WARRANT TYPE


-Select ▼

BOND TYPE

-Select- ▼

ISSUE DATE FROM **ISSUE DATE TO** **OR SELECT A RANGE**





-Select- ▼

CHARGE CATEGORY

-Select- ▼

CHARGE

Cancel

Save

Additionally, users may select from Agencies, People, and Officers when defining mapping queries. (One of the reasons the Query Wizard is helpful is that it makes it easier to see and enter this type of data.)

Other Criteria

⊗ Agencies

⊗ People

⊗ Officers

Display Options

☒ Show All Shapes

☐ Show Only Selected Shapes

☐ Show Outlines of Selected Shapes

SHAPE COLOR OPACITY

Designating Shapes

Before events can be displayed, a shape is required. You can select from a circle, a shape you draw manually, or a shape that has been created for use by your agency. The side menu slider button allows you to adjust the opacity of the shape created.

Query Wizard

☒ Circle

☐ Draw A Shape

☐ Select Shape(s)

LATITUDE

Lookup Address

0

LONGITUDE

0

RADIUS

1

Miles

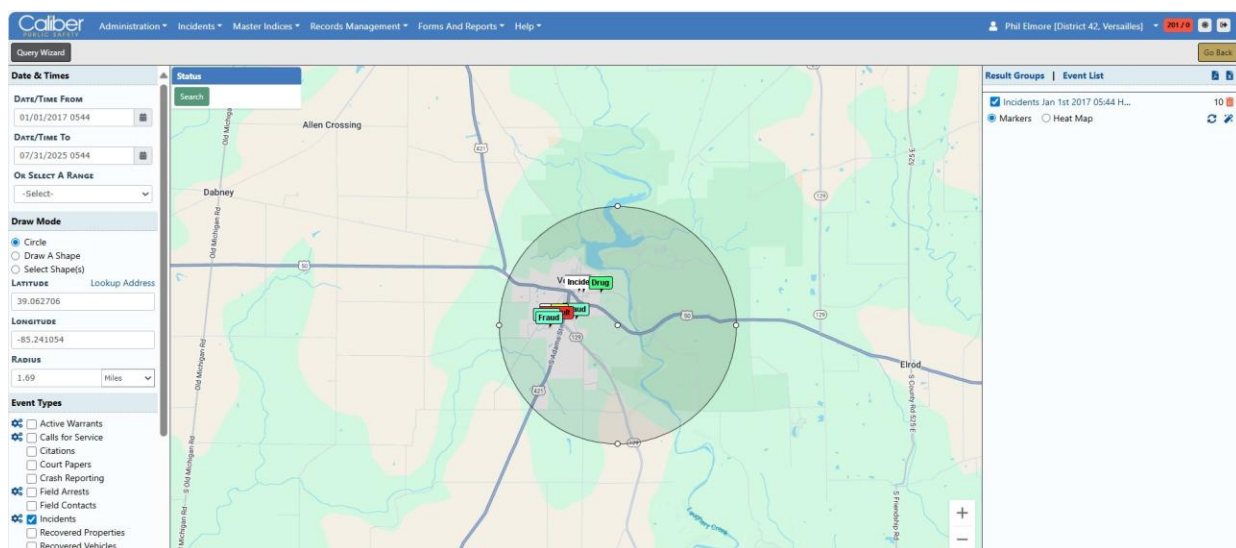
▼

Draw Mode

☐ Circle
 ☐ Draw A Shape
 ☒ Select Shape(s)

☐ Indiana State Police
 ☐ Uncategorized

The shape requirement is indicated by the [Shape] Required flag on the Event Map page. If you have Circle selected, the flag will say . If you have selected, the circle will say . If you have selected, the flag will say .

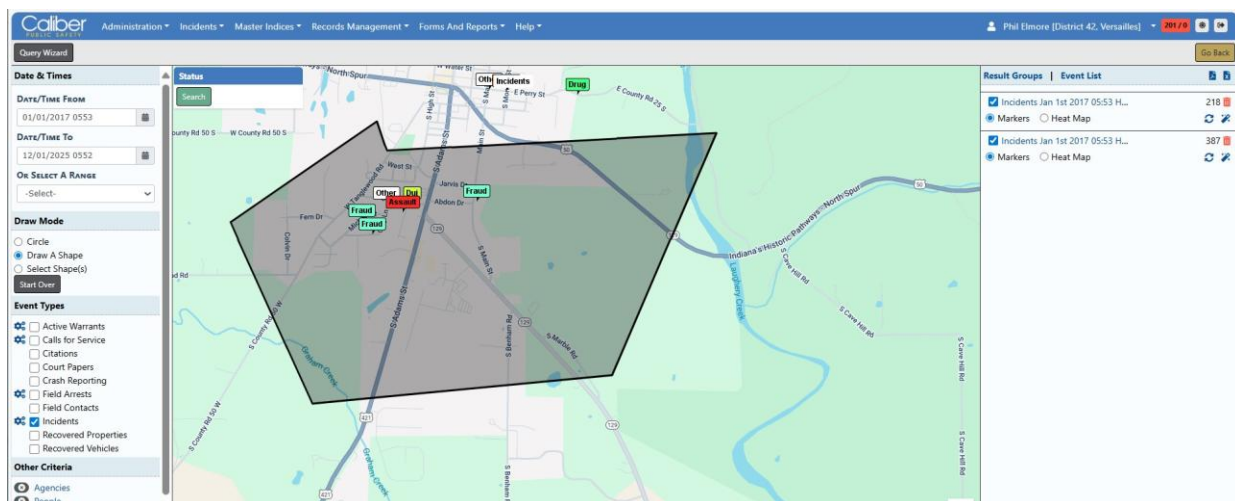


Once the circle exists on the map, the user may stretch it or shrink it by clicking it on it and grabbing one of the index points on the circle. This changes the radius. The circle can also be moved around on the map, changing its center point.

NOTE:

Use the Lookup Address link to identify a verified address that becomes the center of the circle with the radius you specify.

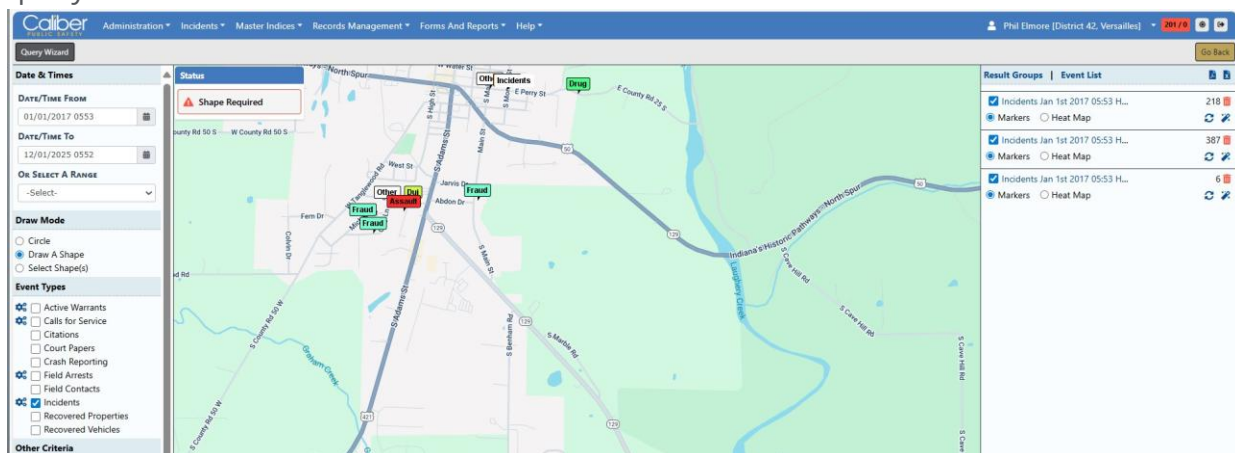
When drawing a shape manually, click to create each segment and connect the shape to activate it.














Selecting an agency defined Shape ID will produce the predefined shape requested.

Query Results






Your query results will display on the map. Completed queries are also listed in the right-hand menu. You have multiple options when organizing and viewing the query results.



Result Groups Event List		 
<input checked="" type="checkbox"/> Incidents Jan 1st 2017 05:53 H...	218 	
<input checked="" type="radio"/> Markers <input type="radio"/> Heat Map	 	
<input checked="" type="checkbox"/> Incidents Jan 1st 2017 05:53 H...	387 	
<input checked="" type="radio"/> Markers <input type="radio"/> Heat Map	 	
<input checked="" type="checkbox"/> Incidents Jan 1st 2017 05:53 H...	6 	
<input checked="" type="radio"/> Markers <input type="radio"/> Heat Map	 	

Click Results Group to see the clustered list . Click Event List for a list of the events for each result group.

For each result group, you may do any of the following:

- Select the Spreadsheet icon  to export a spreadsheet of the event results.
- Select the PDF icon  to export a PDF of the event results.
- Switch from map Markers to the Heat Map of the results by selecting the associated radio buttons.
- Select the Delete icon  to remove the results group from the list.
- Select the Reload icon  to reload the query parameters used for that result group into the left-side menu.
- Select the Wand icon  to enter the query parameters used for that result group into the query wizard.

To hide or display results in a group on the map, the user must select or deselect the checkbox to the left of the query result group.

At this time, clicking an event on the Event Map does NOT bring up the associated record. Record numbers must be recorded manually for subsequent lookup.

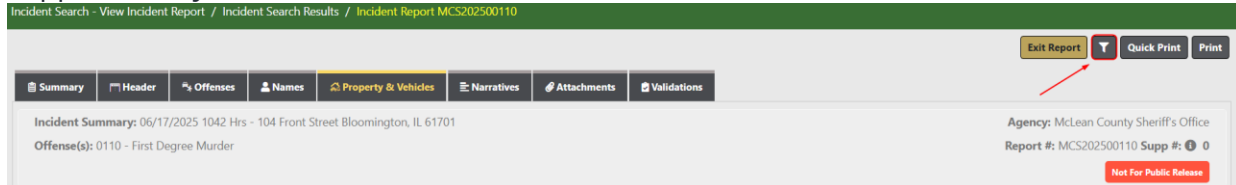
Note when mapping Warrants the default time range is All.

FIGURE 1: EVENT MAPPING

Viewing Supplements – Usability Improvement

Caliber Concepts RMS-I-352

From any tab within the Incident Report, you can now use the filter to select which supplements you want to view.



Same functionality as on the Summary Tab

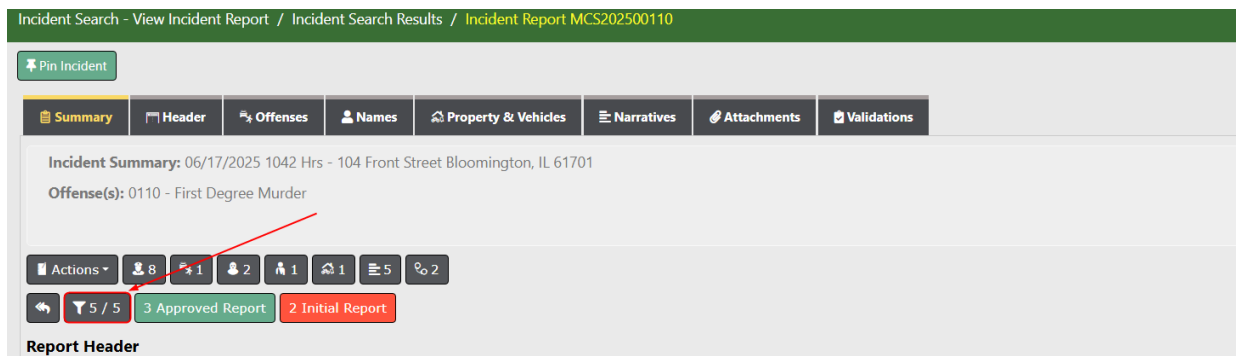


FIGURE 2: VIEWING SUPPLEMENTS - USABILITY IMPROVEMENT

Log Case Investigative Case Hours Quick Link

Caliber Concepts RMS-I-415

A new Quick Link button has been added to allow the logging of Case Hours directly from the Case Search results and the My Cases screen.

Status Indicators

- More than 10 days
- Within 10 days
- Overdue

By Open / Closed Status

- Open
- Closed

By Case Status

Search

100

1 / 1

Go Back

Reference Numbers	Status	Date Assigned	Location	Victims	Offenders	Offenses	Next Review Date	Actions
MCS202400074	Open	02/28/2024	1415 North Main Street Bloomington, IL 61824	Sally McCallerson	Tom Jones	1	03/09/2024	<div><div></div><div></div><div></div><div></div><div></div></div>

Log Hours

SELECT TYPE

☒ ADD HOURS ☐ UPDATE HOURS

CURRENT HOURS:

No Hours Logged

LOG NEW HOURS

<input type="text"/>	Hrs	<input type="text" value="00"/>	Min
----------------------	-----	---------------------------------	-----

Cancel Save

FIGURE 3: INVESTIGATIVE CASE HOURS QUICK LINK

Expunge Narrative Redaction Enhancements

From user input at the 2025 Customer Conference

When expunging a person, a new **"Redact Text"** field has been added to the Expunge Narrative page. This feature allows users to enter specific text to be automatically searched and redacted from applicable narratives.

Additional enhancements include:

- **Redaction Shortcuts:** Quick shortcuts have been added to auto-populate the Redact Text field with the person's full name, first name, or last name.
- **Undo Support:** Before a redaction run is executed, the system now creates an **"Undo Snapshot"**. This allows users to revert changes if a redaction was performed in error.

FIGURE 4: EXPUNGE NARRATIVE REDACTION ENHANCEMENTS

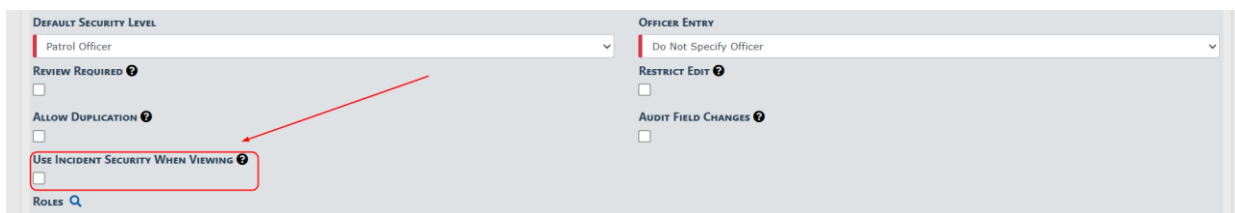
Custom Forms Security

Caliber Concepts RMS-I-381

Form Security Enhancement

A new checkbox labeled **"Use Incident Security When Viewing"** has been added to the Form Admin page.

- When enabled, this setting ensures that if a user attempts to view a form associated with an incident, a security check will be performed to verify their access to the related incident supplement.
- If the user does not have the appropriate access, they will be redirected to an **Access Denied** screen with a message explaining the reason.



The screenshot displays the 'Form Admin' interface. On the left, under 'DEFAULT SECURITY LEVEL', there is a dropdown menu set to 'Patrol Officer'. Below this, there are three checkboxes: 'REVIEW REQUIRED' (unchecked), 'ALLOW DUPLICATION' (unchecked), and 'USE INCIDENT SECURITY WHEN VIEWING' (unchecked). The 'USE INCIDENT SECURITY WHEN VIEWING' checkbox is highlighted with a red rectangular box, and a red arrow points to it from the right. At the bottom left, there is a 'ROLES' section with a magnifying glass icon. On the right side, under 'OFFICER ENTRY', there is a dropdown menu set to 'Do Not Specify Officer'. Below this, there are two checkboxes: 'RESTRICT EDIT' (unchecked) and 'AUDIT FIELD CHANGES' (unchecked).

FIGURE 5: FORM SECURITY ENHANCEMENT

APPENDIX: 11.19.0 PRODUCT CHANGE NOTICE (PCN) – DETAILED JIRA LISTING

TABLE A: Release Enhancements and Product Software Issue Resolutions

This table contains enhancement, software issue, and interface JIRAs contained in the 11.19.0 release.

JIRA #	Client Ticket #	Summary	Type of Issue	RMS Module	Functional Documentation
IA-77582		Struts To Spring - Master Index Property Add	Engineering Enhancement	Master Indices	Converted the Property Add screen from struts to spring and modified all other modules that associate property.
IA-77615		MECC Criminal Complaint PDF Report	Enhancement	Criminal Complaint	The standard Criminal Complaint and Juvenile printed reports have been modified to conditionally display the <i>Interpreter Needed</i> field. The system now retrieves the most recent language record for the individual. If the primary language is English , the <i>Interpreter Needed</i> field will be omitted. For all other languages, the field will be displayed accordingly.
IA-77931	430601	Report Module - Incident Type Report is showing error	Bug/Defect	Reporting	
IA-77936	430508	Notification - INCIDENT FOLLOW_UP CASE CLOSED - CID SUPERVISOR	Enhancement	Notifications	Updated workflow allowing the notification to be deleted

JIRA #	Client Ticket #	Summary	Type of Issue	RMS Module	Functional Documentation
		cannot be deleted until go back to Notification Listings			
IA-78621		Add Electronic Signature Capture to Tow/Impound	Enhancement	Tow Impound	
IA-78772		Incident State Status not showing the correct status	Bug/Defect	Incidents	The Online RMS Incident Reporting Summary screen has been updated to more accurately reflect the submission status of an incident during view or edit. Previously, if a supplement was added that did not affect NIBRS reporting, the incident could incorrectly appear as <i>Not Reportable</i> —even when the main incident was reportable. This behavior has been corrected to ensure accurate reporting status is shown in such cases.
IA-78930	437690	RMS - Jasper Report gives error when try to export to PDF when a field overflows	Bug/Defect	Ad Hoc Reporting	Corrected overflow error.
IA-79317	440401	RMS - Desoto requests	Bug/Defect	Warrants	
IA-79406	441360	RMS - Fleet Clerk Permission	Enhancement	Fleet Mgmt	
IA-79645		Crash - allow disapproval comments	Enhancement	Crash Reporting	A new link titled " View Disapproval Comments " has been added to the sidebar on the crash view/edit screens. This link is conditionally displayed and will only appear if at least one

JIRA #	Client Ticket #	Summary	Type of Issue	RMS Module	Functional Documentation
					disapproval comment exists. Selecting the link navigates the user to a page displaying a grid of disapproval comments.
IA-79717	444089	RMS - VADMV Error received when navigating to Case in Case Management.	Bug/Defect	Follow-up Cases	
IA-79871	445613, 453775	RMS - Property Description displays error	Bug/Defect	Master Indices	
IA-79931	446629	Incident Rules and Validations add Conditions for victim offender relationships	Bug/Defect	Admin	
IA-79936	446657	Incident Rules and Validations Offender Use of Force	Bug/Defect	Admin	<p>The following are now available for offender rules & validations:</p> <ul style="list-style-type: none"> * Roles. This is available for factors, but not properties. You can now validate offenders based on what roles they have * Unknown. This was made available specifically for this, and only as a means to future proof. _We don't currently support validating unknown offenders_. However, if that were to happen, if the requested rule in this Jira is configured, it should use this property as well in case unknown offenders are validated in the future (meaning, it won't cause a regression issue with this

JIRA #	Client Ticket #	Summary	Type of Issue	RMS Module	Functional Documentation
					configured rule) * -Levels of Force. This is added _both as a property and factor_. Meaning you can make the field required, hidden, etc now.-
IA-80113		Mapping - Search By Officer ID	Enhancement	Incident Mapping	Added an officer auto complete to the officers filter for the new event map module.
IA-80177		Offense Tables - Add ability to disable the editing of the three main offense tables	Enhancement	Admin	Added a new permission Category called "Administration - Show RMS Charge Tables". This permission will allow the user to see State Offense Codes, Arrest Codes, and Charge Codes tables.
IA-80202	448832	NIBRS Aggravated Assault Circumstances set code list per highest offense when incident has both 09A and 09B for one victim	Bug/Defect	State Submissions	Incident Reporting Update: The Online RMS Incident Reporting module has been updated to refine the List of Values for <i>Incident Victim Aggravated Assault Circumstances</i> . When a single victim is associated with both offense codes 09A and 09B, only 09A (the higher offense) is reportable to NIBRS. As a result, the system will now present Aggravated Assault Circumstances values only for the highest applicable offense—09A in this scenario.
IA-80217		RMS – Evidence/Disposition Review	Enhancement	Property Mgmt	
IA-80222	448769	RMS - MSP requests Incident Audit log display a person	Enhancement	Emulation	UserDetails Enhancement: A new method <code>getUserNameForAuditing()</code> was added to the UserDetails object. This method returns the main

JIRA #	Client Ticket #	Summary	Type of Issue	RMS Module	Functional Documentation
		emulating a user and not the user being emulated when viewing an incident.			username if the user is being emulated; otherwise, it returns the current username. This enhancement improves auditing accuracy by identifying the original user in emulation scenarios.
IA-80284		Mapping - minor usability issues	Enhancement	Incident Mapping	
IA-80438		Additional MSP Event Map Requests	Enhancement	Incident Mapping	
IA-80545	451412	NJNIBRS Firearm Warnings do not show if the offense is added on a supplement	Bug/Defect	State Submissions	NJ NIBRS Validation Update: The Online RMS Incident-Based Reporting for New Jersey (NJ NIBRS) has been updated to enforce validation rules for firearm reporting. The State of New Jersey requires that all firearms reported to NJ NIBRS include the make, model, and caliber or gauge . Previously, the RMS may not have validated this correctly when offenses and associated property records were entered on separate supplements. This issue has been resolved to ensure proper validation across all NJ NIBRS Incident submissions.
IA-80628		Create a LInX Interface for Online RMS at Danville Police Department - VA107	Configuration	Interface	The LINX interface has been placed online for Danville PD.
IA-80685		NIBRS 2023: Victim	Bug/Defect	State Submissions	The Online RMS Incident-Based Reporting module has been

JIRA #	Client Ticket #	Summary	Type of Issue	RMS Module	Functional Documentation
		Offender relationship of 'Roommate' is not a valid value			updated for select clients to support the use of the CO – Cohabitant value for the <i>Victim to Offender Relationship</i> field. This change aligns with the NIBRS 2019 and 2023 standards, replacing the previously used “Roommate” value with the standardized Cohabitant designation where applicable.
IA-80690	452250	Database View Issue - WARRANTS_VW slowness	Performance	Admin	<p>The Online RMS WARRANTS_VW view, used for ad-hoc queries, data retrieval, and Jasper reporting, has been analyzed and optimized to improve performance. This view is primarily used by advanced users for comprehensive warrant data access.</p> <p>The updated view delivers a 4-to-1 performance improvement over the previous version when retrieving the full dataset. Performance gains may vary depending on the user's data source and the total number of warrant records. While the view is now optimized, any remaining slowness is attributable to the volume of consolidated data being returned. Additional performance improvements can be achieved by developing a custom, reduced-data view tailored to specific needs upon request.</p>
IA-80729		Add Injury Code mappings for 64A and 64B offenses	Bug/Defect	Incidents	The Online RMS Incident-Based Reporting (NIBRS) has been updated to include the required Injury Code Mappings for NIBRS Offense Codes 64A and 64B . This update has been applied across

JIRA #	Client Ticket #	Summary	Type of Issue	RMS Module	Functional Documentation
					all clients using Online RMS. Users will now see the previously missing injury code options when reporting offenses linked to 64A or 64B. The mappings were added for all eight standard NIBRS Injury Codes , ensuring compliance with reporting requirements.
IA-80790	452749	RMS - All users added to a Field Contact should be able to edit the contact	Enhancement	Field Contact	Users are no longer required to be the creator of a field contact in order to edit it. A user may now edit a field contact if they are listed as an officer on the contact. Note: If a case is associated with the field contact, the system will prevent any edits or deletions to maintain data integrity.
IA-80843	453208	NIBRS Exceptional Cleared Date can not be earlier then the Reported Date or after the Submission Date	Bug/Defect	State Submissions	The Online RMS Incident-Based Reporting (NIBRS) has been updated to include a new validation rule during incident approval. For offenses marked as exceptionally cleared , the offense status date (date of clearance) must meet the following criteria: <ul style="list-style-type: none"> It must be after the incident report date. It must not be in the future (i.e., it cannot exceed the current date). This validation aligns with NIBRS requirements and has been implemented for all Online RMS users to ensure compliance.
IA-80876	453384	Event Mapping - Shape layers are not in alphabetical order	Bug/Defect	Incident Mapping	

JIRA #	Client Ticket #	Summary	Type of Issue	RMS Module	Functional Documentation
IA-80890		Property Struts to Spring - Create New Category Tag	Engineering Enhancement	Incidents	
IA-80896	453572	Event Mapping - Add ability to to input an address to start the "Circle" Draw Mode	Enhancement	Incident Mapping	<p>A new "Search for Address" link has been added near the Latitude field on both the sidebar and the wizard within Online RMS. The behavior of this feature varies based on whether the Google Places integration is enabled:</p> <ul style="list-style-type: none"> • With Google Places Enabled: Users are prompted to begin typing an address and select from the Google Places autocomplete results. • Without Google Places: Users are prompted to type an address and press Enter. A table of potential address matches will display below the input field, allowing the user to select the appropriate result. <p>Once an address is selected:</p> <ul style="list-style-type: none"> • The Latitude and Longitude fields are populated automatically. • A circle is displayed on the map at the selected location.
IA-80897	453384	Event Mapping - Add Ability to copy an existing search	Enhancement	Incident Mapping	<p>The layer display (right sidebar) has been updated to show 2 new icons on the bottom right portion of each layer summary:</p> <p>* First Icon is a 'refresh' icon</p>

JIRA #	Client Ticket #	Summary	Type of Issue	RMS Module	Functional Documentation
		parameters from an existing search in the Results Group			<p>which, when clicked, will load the search parameters from that layer into the _left sidebar query parameters_.</p> <p>* The second icon is a 'wizard' icon. When clicked, it will load the search parameters from that layer into the query wizard.</p> <p>These two icons basically allow you to load up the query from that layer, modify it, and run it again w/ tweaked parameters. The difference is where/how you modify the query.</p>
IA-80926	453764	New Agency - The JS_ORGANIZATION field needs updated when a new agency created	Bug/Defect	Admin	The JS_ORGANIZATION should now default to the correct value when adding an agency via the add agency link or Agency Setup Wizard link
IA-80931		Admin ~ Agencies ~ State Submission Systems Change header Labels	Enhancement	Admin	<p>The Online RMS Agency Admin Screen for NIBRS / State Submissions has been updated to improve usability. The labels have been changed as follows:</p> <ul style="list-style-type: none"> • “New Systems” is now labeled “XML Submission” • “Legacy System” is now labeled “Flat File” <p>These changes provide clearer descriptions of the submission methods controlled by each option.</p>
IA-80936	453887	KIBRS Submission reported the offense with	Bug/Defect	State Submissions	The Online RMS Incident-Based Reporting for Kansas (KIBRS) has been updated to improve how offenses are selected for

JIRA #	Client Ticket #	Summary	Type of Issue	RMS Module	Functional Documentation
		Severity 2 instead of Severity 1			reporting in the KIBRS submission file. Previously, the system relied on offense codes to determine which offense to report, selecting the first offense code found. With this update, the system will now evaluate offenses based on their Severity value—using a ranking where 1 is the highest severity . When grouping offenses for reporting, the offense with the highest severity will be used to populate the Kansas statute fields in the KIBRS submission file, ensuring more accurate and compliant reporting.
IA-80943		Add ability to search by user's title	Enhancement	Admin	On user admin search, the Title can now be searched on.
IA-80944		Pinned Records (Add Driver's License Number)	Enhancement	Notifications	The Pinned Records section now displays a person's driver's license number and state . Additionally, a new action button has been introduced, allowing users to copy the license number to their clipboard with a single click for improved usability and efficiency.
IA-80947		Submission Error sending Crash to the State	Bug/Defect	Crash Reporting	
IA-80951		PORT - NJ Datasets is taking minutes to load	PORT	State Submissions	he Online RMS Incident-Based Reporting module has been updated to improve performance on the Data Submission screen. Previously, some users experienced delays when loading the screen and generating a new dataset for a submission month.

JIRA #	Client Ticket #	Summary	Type of Issue	RMS Module	Functional Documentation
					This update includes optimizations that reduce excessive searching and processing during dataset preparation—particularly benefiting agencies with auditing enabled or multiple submitting agencies handling a high volume of monthly reports. These changes result in faster load times and more efficient submission processing.
IA-80954		When reviewing narratives using the information bubble on the left, it would be nice to include the title of the narrative. - AHA - RMS-I-380	Enhancement	Incidents	
IA-80955		Viewing Supplements - Usability Improvement - AHA - RMS-I-352	Enhancement	Incidents	<p>All top-level Incident pages—i.e., any screen accessed via the main incident tabs—now include a Filter button featuring a filter icon.</p> <ul style="list-style-type: none"> • Functionality: Clicking the Filter button opens a dialog allowing users to select which supplements they want to view. • Behavior: After making a selection and clicking Save, the screen will refresh to display only the selected supplements. <p>This enhancement provides users with greater control over which</p>

JIRA #	Client Ticket #	Summary	Type of Issue	RMS Module	Functional Documentation
					incident supplements are shown, improving clarity and navigation efficiency.
IA-80956		Trace Amounts - Usability Improvement - AHA - RMS-I-351	Enhancement	Incidents	A new " Add Trace Amount " button has been added to the Quantity field when adding a drug property. Clicking this button automatically sets the quantity to a default value of 0.001 . This feature has been implemented in both the standard drug property add and mass drug add workflows, streamlining entry for trace-level drug quantities.
IA-80957	453738	PORT - Danville Crash Printed report missing value 7 Relation to Roadway	Bug/Defect	Crash Reporting	Modified the Virginia crash pdf to use the correct radio mapping value.
IA-80958		PORT - RMS - Warrants coming over from Odyssey are removing the Ethnicity value in the Person Record	Bug/Defect	Interface	The Online RMS Odyssey Warrant Interface has been updated to properly handle situations where the ethnicity code is missing from the warrant transfer XML. Previously, if the XML did not include an ethnicity value, the interface would overwrite the existing ethnicity for the person in RMS with a blank or null. This behavior has been corrected—the system will now only update the ethnicity from the warrant if the value provided is non-blank . This ensures that valid, existing ethnicity data in RMS is preserved when the warrant XML lacks that detail.

JIRA #	Client Ticket #	Summary	Type of Issue	RMS Module	Functional Documentation
IA-80961		PORT - TN NIBRS TN36 Previous Domestic Violence Arrest	Bug/Defect	State Submissions	The Online RMS Incident-Based Reporting for the state of Tennessee (TN NIBRS) has been updated to correctly include the Previous Domestic Violence Arrest data element (TN36) in the XML submission file. Previously, this value was not being reported in certain cases where it should have been. This issue has now been resolved. The correction ensures compliance with Tennessee-specific NIBRS reporting requirements and only impacts TN NIBRS RMS clients .
IA-80962		PORT - TN NIBRS: Victim Custom Field TN22 VIOLATION OF ORDER OF PROTECTION not reported when DV = Yes	PORT	State Submissions	The Online RMS Incident-Based Reporting for the state of Tennessee (TN NIBRS) has been updated to correctly include the Order of Protection Violation data element (TN22) in the XML submission file. This value was previously not being reported in certain cases where it should have been. The issue has now been resolved to ensure full compliance with Tennessee-specific NIBRS reporting standards. This update only affects TN NIBRS RMS clients .
IA-80964		PORT - TN NIBRS Custom Fields Data Deleted needs to Delete the Submission data	Bug/Defect	State Submissions	The Online RMS Incident-Based Reporting for the state of Tennessee (TN NIBRS) has been updated to correct the reporting of Gang Activity data elements in the XML submission file. Previously, the system was erroneously including Gang Activity data in certain cases where no such activity was present. This issue has now been

JIRA #	Client Ticket #	Summary	Type of Issue	RMS Module	Functional Documentation
					resolved to ensure that Gang Activity is only reported when applicable . This correction only impacts TN NIBRS RMS clients .
IA-80969		PORT - The Interface Maintenance Missing from the Knox County (IN42) Schema	Bug/Defect	Admin	
IA-80970		PORT - Print Option for Incident Report	Enhancement	Incidents	New Incident Print option to Hide File Class. By default all templates are set to N. For Mclean (IL57) they are all set to Y.
IA-80971		PORT - Add Field Arrest Print Options	PORT	Field Arrest	Added 3 new print options to the Field Arrest Print. These options can be found in a new section labeled Hide Options. These options allow the user to hide arrestee information. new options: -Hide Drivers License # -Hide Phone Numbers -Hide Caution Codes
IA-80975		Warrant Log formatting issue	Bug/Defect	Warrants	
IA-80980	454103	PORT - Crash Reporting - Error printing Crash Report	PORT	Crash Reporting	
IA-80985	454065	RMS- MSP unable to view Local Offense Codes in Glossary	Bug/Defect	Incidents	
IA-80991		Struts To Spring - Master Index	Engineering Enhancement	Master Indices	

JIRA #	Client Ticket #	Summary	Type of Issue	RMS Module	Functional Documentation
		Property Edit & View - PART 2			
IA-80993		PORT - Add spaces to Serving Officers Name on Warrant info screen	PORT	Warrants	
IA-80994		PORT - Civil - Log entry writing incorrect person served name	PORT	Civil Process	
IA-80995		PORT - TN NIBRS: Incident Rules and Validations - Add Drug Related Condition when NIBRS offense = 35A	PORT	State Submissions	<p>An additional Incident Rule and Validation has been implemented for TN NIBRS RMS clients. This update enhances Incident Offense Rules and Validations as follows:</p> <ul style="list-style-type: none"> When a NIBRS offense code = 35A (Drug/Narcotic Violations) is selected, the system will now prompt the user to mark the offense as "Drug Related = Yes." Once marked as drug related, the system will display additional custom fields for the user to complete: <ul style="list-style-type: none"> Origin of Drug Drug Type <p>This rule ensures required data is captured for proper TN NIBRS reporting and applies only to TN NIBRS RMS clients.</p>
IA-80997		Crash - updated crash mapping	Bug/Defect	Crash Reporting	

JIRA #	Client Ticket #	Summary	Type of Issue	RMS Module	Functional Documentation
		codes for Not Applicable and remove space			
IA-80999		PORT - Crash - Crash report with multiple drivers on single vehicle fails submission	PORT	Crash Reporting	
IA-81000		PORT - Crash - allow user to search crash by submission document number	PORT	Crash Reporting	
IA-81004		PORT - Crash - flip error/warning on custom validations	PORT	Crash Reporting	Wrote a script to change the data in CRASH_VALIDATIONS as written in the description.
IA-81008		PORT - Crash - displays submission status and history	PORT	Crash Reporting	<p>A new "Submission Status" entry has been added to the sidebar of the crash report interface. This section displays:</p> <ul style="list-style-type: none"> The current submission status The associated submission document number (if applicable) <p>Additionally, for crashes that have a document number, a new "Submission History" link will appear in the crash links area. Clicking this link opens a dialog showing the full submission history for the crash report, ordered by submission date (descending) for easy reference.</p>

JIRA #	Client Ticket #	Summary	Type of Issue	RMS Module	Functional Documentation
IA-81010		Event Map - Can move map out of the frame and under the header	Bug/Defect	Incident Mapping	
IA-81011		PORT - TN NIBRS: <nc:Substance missing when 35A offense is Attempted and Drug Property Loss = None	PORT	State Submissions	The Online RMS Incident-Based Reporting for Tennessee (TN NIBRS) has been updated to correctly include the Substance in the TN NIBRS XML file when the drug property loss type is NONE . Previously, the Substance element was not being reported in these cases. This issue has been resolved to ensure accurate and complete data submission in compliance with TN NIBRS requirements. This correction only impacts TN NIBRS RMS clients .
IA-81012		PORT - Crash - change for CRASH.REPORT_FILED_DATE	PORT	Crash Reporting	<p>* The Report Filed Date field is now being set *just before* the crash is submitted.</p> <p>* The OfficerReportFiledDate XML field for VA now uses the Report Filed Date for its source</p>
IA-81015	454387	NIBRS Adding offender as victim allowing to save and canceling the validation Need two offender and two victims with the same offended	Bug/Defect	State Submissions	<p>The Online RMS Incident Reporting module has been updated to resolve an issue with Victim to Offender relationship validations when the relationship is set to Victim is an Offender (VO).</p> <p>Previously, if two offenders were added with this relationship and one was later removed, the system did not re-trigger the validation, potentially allowing invalid or incomplete relationships to persist.</p>

JIRA #	Client Ticket #	Summary	Type of Issue	RMS Module	Functional Documentation
					This issue has been corrected by updating the validation logic to verify that the relationship references an offender currently listed in the Offenders section of the report. This ensures consistent and accurate validation of VO relationships.
IA-81016	454387	NIBRS Aggravated Assault Circumstances add a tooltip for error 480 value 08 Other Felony Involved	Bug/Defect	State Submissions	<p>The Online RMS Incident Reporting module has been updated to include a new warning for NIBRS Data Element 31 – Aggravated Assault/Homicide Circumstance 08 (Other Felony Involved).</p> <p>This warning appears on the Incident Validations Screen if the user selects Circumstance 08, but the incident contains only one NIBRS felony-related offense. According to NIBRS standards, the “Other Felony Involved” must refer to a distinct and separate NIBRS offense code.</p> <p>Examples of valid use:</p> <ul style="list-style-type: none"> A bystander walks in during a burglary and is assaulted. A bystander attempts to intervene in an ongoing assault and is also assaulted. <p>This update addresses NIBRS Error Code 480 and has been deployed to all RMS clients, enhancing data quality by alerting users to potential reporting issues.</p>
IA-81017	454448	NIBRSVA Victim of both 13A 13B the 13B should	Bug/Defect	State Submissions	The Online RMS Incident-Based Reporting for Virginia (NIBRSVA) has been updated to fix an issue involving victims linked to

JIRA #	Client Ticket #	Summary	Type of Issue	RMS Module	Functional Documentation
		have been excluded from the submission			<p>multiple offenses, where one offense was a lesser offense per NIBRS specifications. Previously, the system may have incorrectly included both offenses in the XML submission. This update ensures that when a single victim is associated with multiple offenses, only the primary (higher severity) offense is reported—excluding the lesser offense in compliance with NIBRSVA reporting rules.</p>
IA-81020	454448	Update NIBRS Warning to include CF Child of Boy/Girl Friend and SC Step Child	Bug/Defect	State Submissions	<p>The Online RMS Incident Reporting module has been updated to enhance an existing NIBRS-related warning shown during incident validation. This warning applies when the Victim to Offender relationship indicates a child/parent-type relationship, but the age difference is less than 10 years. The updated warning now includes additional relationship types:</p> <ul style="list-style-type: none"> • Parent/Child • Grandparent/Grandchild • Step Parent/Step Child <i>(new)</i> • Child of Boyfriend/Girlfriend <i>(new)</i> <p>Updated Warning Message: <i>“Child/Parent, Grandchild/Grandparent, Child of Boyfriend/Girlfriend, or Step Parent/Step Child relationship specified; however, there is less than 10 years difference in age. Please verify age and/or relationship.”</i></p>

JIRA #	Client Ticket #	Summary	Type of Issue	RMS Module	Functional Documentation
					This change ensures users are alerted to potentially inaccurate age-to-relationship combinations in compliance with NIBRS validation expectations.
IA-81021	453925	Cases - Case Load count is wrong	Bug/Defect	Follow-up Cases	The queries used to calculate counts on the Case Search , My Cases , and Case Load screens have been corrected. Previously, discrepancies existed due to inaccurate query logic. With this update, the counts and results displayed across all three screens are now consistent and accurate.
IA-81030	454013	PORT - MICR Offense 48000 NIBRS Code 90Z- GILS Should not report LEOKA Data	PORT	State Submissions	<p>The Online RMS Incident-Based Reporting for the State of Michigan (MICR) has been updated to ensure proper handling of LEOKA (Law Enforcement Officers Killed or Assaulted) data.</p> <p>Previously, if an offense requiring LEOKA data was entered and LEOKA data was added to the victim, but the offense was later removed from the incident before submission, the system would still report the LEOKA data. This behavior has now been corrected.</p> <p>The system will now only include LEOKA data in the MICR submission if a qualifying offense is present at the time of submission. This update ensures accurate and compliant LEOKA reporting for all MICR RMS clients.</p>
IA-81031		Dynamic Form Import/Export	Enhancement	Crash Reporting	Administrators now have the ability to export and import

JIRA #	Client Ticket #	Summary	Type of Issue	RMS Module	Functional Documentation
					<p>dynamic forms within the Crash Form Admin screen.</p> <ul style="list-style-type: none"> A new Download link appears next to each form listed, allowing admins to export a JSON file containing the form's definition. To import, click the "Import Form" button at the top of the screen, select the desired JSON file, and provide a unique name to distinguish the new form. <p>Note: This feature does not include custom field definitions in the export/import. Only the form layout, placement, and any XML validation references will be preserved.</p>
IA-81033	453891	PORT - Crime Mapping - Issue with filtering on Crime Mapping	PORT	Crime Map	
IA-81038		PORT - Interface Integration - Odyssey Courts to Online RMS for Tipton County Sheriff's Office - IN (IN80)	Configuration	Interface	The Odyssey Warrant interface has been set-up and configured for Tipton County.
IA-81039		Require Measurement Units for all Drug Property	Enhancement	Incidents	A new maintenance value, PROPERTY_REQ_DRUG_QUANTITY_AND_MEASURE , has been added. When set to Y , it makes

JIRA #	Client Ticket #	Summary	Type of Issue	RMS Module	Functional Documentation
		- AHA RMS-I-414			<p>the Drug Quantity and Measure fields required on drug property entries.</p> <p>To support real-world exceptions, users now have the option to override this requirement by:</p> <ul style="list-style-type: none"> • Selecting the new checkbox: "Quantity or Measure is not available" • Providing a reason in the new required field: "Reason Quantity or Measure is not available" <p>This override functionality is available on both the Single Property Add and Property Edit screens.</p> <p>Note: The override option is not available on the Mass Property Add screen as of this release.</p>
IA-81040		Log Case Investigative Case Hours Quick Link AHA RMS-I-415	Enhancement	Follow-up Cases	<p>A new "Log Hours" button has been added to both the My Cases screen and the Case Search results screen.</p> <ul style="list-style-type: none"> • My Cases Screen: The button is visible to users with the "Case Management – Update Case Hours" permission. • Case Search Results Screen: The button is visible only if the user has edit access to the case and the Update Case Hours permission. <p>Additionally, the Log Hours dialog has been enhanced to display the Current Logged Hours, giving users immediate</p>

JIRA #	Client Ticket #	Summary	Type of Issue	RMS Module	Functional Documentation
					context when updating case time entries.
IA-81041		Reporting Area in Field Arrest AHA RMS-I-405	Enhancement	Field Arrest	<p>This update introduces enhancements to Field Arrests and Incident Search screens, specifically related to Reporting Area functionality.</p> <p>Key Changes:</p> <ul style="list-style-type: none"> • BEAT and SUB_BEAT fields have been added to the ARRESTS table. • These fields can be set on the Arrest Details tab, just below the location field. • The View Field Arrests screen will now display BEAT/SUB_BEAT below the location. • The Printed Field Arrest Report now displays the Reporting Area next to the location near the top of the report. • The Field Arrest Search screen has been updated to allow searching by Reporting Area, per request from MSP (see Darin's comments). • The Incident Search screen has also been updated to search on the Reporting Area of the Incident Address. <ul style="list-style-type: none"> ○ If the incident includes other locations, the search will still reference the reporting area tied to the main

JIRA #	Client Ticket #	Summary	Type of Issue	RMS Module	Functional Documentation
					<p>incident address.</p> <p>⚠ NOTE: This update involves a change to the Incident Search functionality. Please ensure any custom search workflows or training materials are updated accordingly.</p>
IA-81043		Incident Search Results Supp# display issue when there are a high number of supps	Bug/Defect	Incidents	The info bubble that displays supplement numbers on incident search results screen now correctly line breaks when hovered over.
IA-81047		PORT - CPS Public website Warrant List	PORT	Community Portal Service	The Online RMS Public Safety System (CPS) has been updated to not retrieve active warrants where the person is less than 18 years old. Previously some warrants of 17 year olds were being displayed in the CPS application. This modification currently only impacts the Danville, VA client.
IA-81050		Sort employments by date of info	Bug/Defect	Master Indices	
IA-81051	451991	PORT - Add to this validation message confirm Offenders were working in concert/Offense separation of time and space	PORT	State Submissions	<p>The Online RMS Incident Validations have been updated to revise the wording of Error Message 2061 for improved clarity and NIBRS compliance guidance.</p> <p>Updated Message Text: <i>Category "Victim Was Offender" requires at least two participants in an incident where both were the victim and offender of the same offense. Additionally, verify that the offenders were acting</i></p>

JIRA #	Client Ticket #	Summary	Type of Issue	RMS Module	Functional Documentation
					<p><i>together and that there was no significant separation in time or location between the offenses. If the offenders were not working together and/or the offenses took place at different times or locations, the incident should be reported separately for NIBRS purposes.</i></p> <p>This update ensures users are properly informed of the specific conditions required for valid reporting under this category.</p>
IA-81053		Crash: Spelling error on Edit/View Driver screen	Bug/Defect	Crash Reporting	The Online RMS Crash Module has been updated to fix a typo for the Airbag Deployment custom field label.
IA-81054		Training Videos Library: Text overflow when Descriptions are long	Bug/Defect	QA	
IA-81055		Update Employment query for Warrant Screen	Bug/Defect	Warrants	Employments query for person now returns employment based on the DATE_OF_INFO descending.
IA-81056		Show the Property Supplement # on the incident property screen - Aha - RMS-I-426	Enhancement	Incidents	
IA-81059		IL NIBRS Changes to allow the submission of duplicate	Bug/Defect	State Submissions	The Online RMS Incident-Based Reporting for the state of Illinois (IL NIBRS) has been enhanced to support the submission of

JIRA #	Client Ticket #	Summary	Type of Issue	RMS Module	Functional Documentation
		UCR Code if the I-UCR code are different			duplicate UCR codes when the associated I-UCR codes differ . This change was implemented at the request of the State of Illinois , allowing agencies to report multiple offenses that map to the same NIBRS offense code but have distinct I-UCR codes (Illinois-specific offense classifications). This enhancement ensures accurate and compliant reporting for complex offense scenarios unique to Illinois.
IA-81061		MICR Version 1.12.0	Bug/Defect	State Submissions	The Online RMS Incident-Based Reporting for Michigan (MICR) has been updated to support the generation of XML files conforming to MICR Version 1.12.0 , upgrading from the previous Version 1.11.0 . This update is mandated by the State of Michigan to ensure all reporting aligns with the latest MICR standards. The change only impacts RMS clients in Michigan who report MICR data.
IA-81064	454621	PORT - Community Portal - Incident Report Search and Print Changes	PORT	Admin	
IA-81069		Caliber Marketplace - Update Content	Enhancement	Marketplace	
IA-81070		Struts To Spring - Master Index Property Edit	Engineering Enhancement	Master Indices	Converted Property Edit/View from struts to spring.

JIRA #	Client Ticket #	Summary	Type of Issue	RMS Module	Functional Documentation
		& View - PART 3			
IA-81071		PORT - Crash - add officer dialog auto-complete can't find any officers in VA107	PORT	Crash Reporting	
IA-81075		Get Commonly Used UserInfo data into SessionStore	Engineering Enhancement	Admin	
IA-81076	454530	PORT - MSP - Auditing 21-MSP-001062	Bug/Defect	Incidents	
IA-81077	454789	RMS - Associations in Crash should automatically remove when an incident report or Citation is deleted	Bug/Defect	Crash Reporting	
IA-81082		Struts To Spring - Master Index Add Property Testing Issues	Release Defects	Master Indices	
IA-81085		Custom Forms Security AHA - RMS-I-381	Enhancement	Custom Forms	<p>A new checkbox labeled "Use Incident Security When Viewing" has been added to the Form Admin page.</p> <ul style="list-style-type: none"> When this option is checked, and a user attempts to view a form associated with an incident, the system will

JIRA #	Client Ticket #	Summary	Type of Issue	RMS Module	Functional Documentation
					<p>enforce incident supplement security.</p> <ul style="list-style-type: none"> If the user does not have access to the associated incident supplement, they will be redirected to an Access Denied screen displaying the reason for denial. <p>This enhancement ensures tighter control over form visibility and aligns access with incident-level security permissions.</p>
IA-81086		PORT - Midland CAD - XSLT Adjustments	PORT	Interface	<p>The Tyler CAD interface for Online RMS has been updated with the following enhancements to improve incident creation and assignment:</p> <ul style="list-style-type: none"> Fire Dispatch Events Omitted: The interface no longer creates RMS records for Fire dispatch events, reducing unnecessary entries. Primary Officer Assignment: When creating an RMS incident, the system now assigns the incident to the primary officer of the primary unit for the respective agency. Incident Report Number Formatting: RMS incident report numbers are now formatted as YY-NNNNNN (e.g., 24-000123), aligning with agency numbering conventions. <p>These adjustments streamline CAD-to-RMS data flow and ensure consistent report</p>

JIRA #	Client Ticket #	Summary	Type of Issue	RMS Module	Functional Documentation
					formatting and officer assignment.
IA-81090		PORT - Crash - add unknown driver with vehicle changes and screen hangs	PORT	Crash Reporting	
IA-81092		PORT - Auditing Queries - Extra Performance Gain	PORT	Auditing	
IA-81100		PORT - Master Index Person Performance Issue Causing Significant CPU Usage on DB Tier	PORT	Master Indices	
IA-81103		Login to allow CJIS Queries in RMS	Bug/Defect	Master Indices	
IA-81111		Crash - add unknown driver with vehicle changes does not show that Unknown Driver was added	Bug/Defect	Crash Reporting	
IA-81117		Arrest - Reporting Area TESTING ISSUES	Release Defects	Field Arrest	
IA-81118		KIBRS: 13C as lesser offense for 13B not in NIBRS_LESSE	Bug/Defect	State Submissions	The Online RMS Incident-Based Reporting for Kansas (KIBRS) has been updated to modify the Lesser Offenses Configuration .

JIRA #	Client Ticket #	Summary	Type of Issue	RMS Module	Functional Documentation
		R_OFFENSES table			NIBRS Code 13C (Intimidation) is now recognized as a Lesser Offense to 13B (Simple Assault) . This ensures that when both offenses are present in an incident, 13B will be prioritized for reporting , and 13C may be excluded in accordance with KIBRS/NIBRS reporting hierarchy standards.
IA-81122		PORT - DB Performance - SOLR Updates	PORT	Admin	
IA-81131	454833	RMS - MSP Unable to load KML File	Bug/Defect	Agency Config Report	
IA-81132	454978	RMS - Field Arrest Property Search not saving / working as expected	Enhancement	Field Arrest	<p>The Field Arrest module in Online RMS has been enhanced to support improved signature tracking for property handling.</p> <p>Key Enhancements:</p> <ul style="list-style-type: none"> Accepting Signature Capture: When property is initially entered into a field arrest, the accepting officer's signature is now captured along with the existing releasing signature. Signature Display on Edit: When editing a field arrest property, both the accepting and releasing signatures (if present) are now visible. Printed Field Arrest Report: Both signatures are included on the printed field arrest report, enhancing chain-of-custody documentation. Signature Clearing on Officer Change:

JIRA #	Client Ticket #	Summary	Type of Issue	RMS Module	Functional Documentation
					<p>If the logging officer or releasing officer is changed, the associated signatures will be cleared to maintain data accuracy.</p> <p>Database Changes:</p> <ul style="list-style-type: none"> ARREST_PROPERTIES – added column: ACCEPT_SIGNATURE_ID ARREST_PROPERTIES_AUDIT – added column: ACCEPT_SIGNATURE_ID <p>These enhancements improve accountability and tracking for property management within field arrests.</p>
IA-81138		PORT - UPDATE - Online RMS Warrant Web Services - Oklahoma County Sheriff's Office - OK	PORT	Warrants	<p>The Online RMS Warrant Name Search Web Service has been updated to return only the primary name for the person/persons matching the name search. The primary name will be returned even if an alias name is searched for and an active warrant is found. Previously the interface would return all names matching the search, regardless of primary or alias.</p>
IA-81139		Incident Offender Rules and Validations: Add Type of Arrest as Factor	Enhancement	Custom Forms	<p>The arrest type is now available as a field to select from _as a factor_ for offender validations:</p>
IA-81149	452146	New Database View for MO NIBRS Jasper Reports	Enhancement	Admin	<p>A new Jasper Reports view, JS_DSICR_PART1_UCR_DETAIL2_VW, has been added to the Online RMS.</p> <ul style="list-style-type: none"> Purpose: This view is designed specifically for

JIRA #	Client Ticket #	Summary	Type of Issue	RMS Module	Functional Documentation
					<p>Missouri NIBRS reporting and provides the necessary data extract to support MO NIBRS-compliant Jasper Reports.</p> <ul style="list-style-type: none"> Usage: It enables agencies to generate detailed and accurate reports for Part 1 UCR Offenses in alignment with Missouri state reporting requirements. <p>This new view supports streamlined and standardized NIBRS reporting for Missouri RMS clients using Jasper Reports.</p>
IA-81154	452428	PORT - Reports - Jasper Ad Hoc folder missing from folder listing	PORT	AdHoc Reporting	
IA-81161		Evidence - incorrectly associated with incident outside of supp when created from edit property	Bug/Defect	Property Mgmt	
IA-81164		Struts To Spring - Master Index Add Property Testing Issues #2	Release Defects	Master Indices	
IA-81165		Get Incident Arrests Query - Performance	Performance	Incidents	
IA-81173		PORT - Excessive	PORT	Admin	

JIRA #	Client Ticket #	Summary	Type of Issue	RMS Module	Functional Documentation
		Notification Queries			
IA-81175		CJIS link incorrectly displayed for non-2FA user and 2FA from public computer	Release Defects	Master Indices	
IA-81176		Property View/Edit Struts to Spring TESTING ISSUES	Release Defects	Master Indices	
IA-81178		Adding the ability to create custom headers in Custom Forms.- RMS-I-412	Enhancement	Custom Forms	
IA-81182		TITAN - Crash Import Service	Enhancement	Interface	<p>An internal RMS microservice has been developed for deployment on a dedicated interface server to support the Titan Interface for select clients. This service is for internal use only and is not part of the end client product.</p> <p>Purpose: The microservice facilitates communication with the Titan web service to:</p> <ul style="list-style-type: none"> Retrieve Crash Data, including diagrams and PDF reports, in JSON format Convert the received data into the standard RMS XML format

JIRA #	Client Ticket #	Summary	Type of Issue	RMS Module	Functional Documentation
					<ul style="list-style-type: none"> Transmit the XML to Online RMS, where it is processed and loaded as an incident report <p>This release represents the first phase of the integration effort. Additional enhancements are planned in subsequent stages to complete the full Titan Interface implementation.</p>
IA-81183		TITAN - Import Multiple Attachments with Standard Incident Upload Service	Enhancement	Interface	Incident upload data exchange processing has been enhanced to support processing multiple attachments.
IA-81186	453925	PORT - Cases - Case Load count is wrong (back port)	Bug/Defect	Follow-up Cases	The Queries we were using to get the counts were wrong. The counts and results shown should now match on the case search, My Cases, and Case load screens.
IA-81188		Custom Forms: Audit log Date of Event Sort Ascending not working	Bug/Defect	Custom Forms	
IA-81191	455651	DIS - DIS information is not appearing in RMS for two users	Bug/Defect	Interface	
IA-81194		IL NIBRS: Second Offense Victim Association not written to XML file when	Release Defects	State Submissions	The Online RMS Incident-Based Reporting for Illinois (IL NIBRS) has been updated to correctly associate offenses to victims when reporting multiple I-UCR codes tied to the same NIBRS offense.

JIRA #	Client Ticket #	Summary	Type of Issue	RMS Module	Functional Documentation
		duplicate NIBRS offense codes but IL-UCR code is different			This resolves a previously identified issue during testing where, in certain cases—especially with multiple victims and offenses —victims were not being properly linked to the correct I-UCR code. The issue has been corrected prior to release , ensuring accurate victim-offense associations in compliance with Illinois-specific NIBRS requirements. This update only affects Illinois RMS clients .
IA-81197		Performance - Get Incident Field Arrests	Performance	Field Arrest	
IA-81199		Arrest Interface - Booking Complete Transaction	Enhancement	Interface	The Field Arrest interface data exchange has been extended to support the ingestion of two additional data elements during the person custody (booking complete) transaction: <ul style="list-style-type: none"> • Arrest Tracking Number • Booking Number These fields will now be captured and integrated into the RMS as part of the standard data flow, enhancing tracking and consistency between external systems and RMS custody records.
IA-81203		Event Map: Search By Officer ID Testing Issues	Release Defects	Incident Mapping	
IA-81210		Property Quantity and Measure TESTING ISSUES	Release Defects	Master Indices	

JIRA #	Client Ticket #	Summary	Type of Issue	RMS Module	Functional Documentation
IA-81211		O'Fallon MoDEx Submissions	Enhancement	Interface	Online RMS now supports MoDex submissions.
IA-81213	455765	RMS - Impound PDF prints a blank page.	Bug/Defect	Printing	The Towing comments detail band did not have a print when expression but all the elements inside did. This caused a blank page to print when printing just the Tow Release.
IA-81224		TITAN - Data Exchange Integration	Enhancement	Interface	Online RMS now supports an inbound data exchange with the Titan crash reporting system.
IA-81233	456146	RMS - Vigo and Terre Haute. When an Incident is created from the Community Reporting Custom Form the incident defaults to Agency Only	Bug/Defect	Custom Forms	
IA-81234	456153	RMS - When a supplement is generated and approved that is associated to a Case in Case Management a notification triggers and displays to users that are deactivated	Bug/Defect	Notifications	
IA-81236		PORT - Midland Tyler CAD XSLT - Incident/Disp	PORT	Calls For Service	The Midland Tyler CAD data exchange has been adjusted to utilize the first CAD Incident Number assigned to the primary

JIRA #	Client Ticket #	Summary	Type of Issue	RMS Module	Functional Documentation
		atch Number Filter			unit as the RMS Dispatch Number.
IA-81238	455193	PORT - MSP Duplicate Cases are getting created	Bug/Defect	Follow-up Cases	
IA-81239	456359	Community Portal - Accident Report print changes for owners	Configuration	Admin	<p>he Crash module has been enhanced to include the ability to search based on owner information. This functionality aligns with existing name-based search capabilities and enables users to:</p> <ul style="list-style-type: none"> • Locate crash reports using owner details • Print crash reports using owner information, consistent with how reports are printed for other involved names <p>This update improves flexibility in data retrieval and supports more comprehensive crash report access and printing.</p>
IA-81240		PORT - McLean County Evidence Release Report Enhancement	PORT	Property Mgmt	
IA-81251		Jasper Report Transfers	TimeTrack	AdHoc Reporting	
IA-81254		Modify Audit query screens	Enhancement	Auditing	<p>A new validation has been added to enforce date range limits on search screens:</p> <ul style="list-style-type: none"> • If either the Date From or Date To fields are populated with a date more than 180 days prior to the current date, a red warning message

JIRA #	Client Ticket #	Summary	Type of Issue	RMS Module	Functional Documentation
					<p>will appear below the date fields informing the user that the selected date is invalid.</p> <ul style="list-style-type: none"> If the user attempts to perform a search with an invalid date range, a quick alert will be displayed, and the search will be blocked until the date range is corrected. <p>This enhancement helps maintain system performance and encourages more targeted search queries.</p>
IA-81256	456362	Community Portal - Should print Report if no juvenile data is present even if juveniles are indicated	Bug/Defect	Admin	<p>The view used for public crash report printing has been updated to improve accessibility while maintaining privacy protections.</p> <p>Previous Behavior: If any individual on the crash report was identified as a minor, the entire report would be blocked from printing.</p> <p>Updated Logic: A special exception has been added:</p> <ul style="list-style-type: none"> If the minor is a passenger and is not injured, the crash report will now be allowed to print. This change is aligned with existing behavior, where injured passengers are not printed on public reports. <p>This enhancement provides better access to public crash reports while continuing to protect sensitive information.</p>
IA-81262		PORT - Arrest Search - Add Document Control	Enhancement	Searching	

JIRA #	Client Ticket #	Summary	Type of Issue	RMS Module	Functional Documentation
		Number (DCN)			
IA-81263	456530	RMS - Danville requests the INCIDENT_CASE_OFFICERS available in Auditing	Configuration	Auditing	
IA-81264	456552	RMS - Hattiesburg has Reporting Areas mapped but does not display in Incident Event Mapping.	Bug/Defect	Incident Mapping	
IA-81285		PORT - TESTING ISSUES - McLean County Evidence Release Report Enhancement	Release Defects	Property Mgmt	
IA-81291		Expungement - Narrative Auto Redact	Enhancement	Incidents	<p>The Expunge Narrative page in Online RMS has been enhanced with new functionality to streamline and safeguard redaction processes during person expungement.</p> <p>Key Features:</p> <ul style="list-style-type: none"> New 'Redact Text' Field: Users can now enter specific text to be searched and automatically redacted from the narrative.

JIRA #	Client Ticket #	Summary	Type of Issue	RMS Module	Functional Documentation
					<ul style="list-style-type: none"> • Name Redaction Shortcuts: Quick-action shortcuts are available to redact: <ul style="list-style-type: none"> ○ The person's full name ○ The first name only ○ The last name only • Undo Capability: Before a redaction run is performed, the system takes an "undo" snapshot of the narrative. This allows users to revert changes if a redaction is done in error. <p>Important Caveat: The redaction search operates by traversing the HTML node tree of the narrative (as the editor treats the document as HTML). If text is split across HTML nodes—for example, the name “Dana” appears as: he system will not detect and redact "Dana" in this case, due to node separation. This limitation is known and users should review results post-redaction to confirm completeness.</p>
IA-81292		Field Arrest Incident Import - Import Arrest Date	Enhancement	Incidents	<p>When importing an arrestee from a Field Arrest into an Incident, users will now be prompted to enter the Arrest Type. This enhancement ensures that:</p> <ul style="list-style-type: none"> • A valid Arrest Type is captured, which is required to create a corresponding record in the Incident Arrestees table. • The Field Arrest date is also automatically carried over to the Incident Arrestee record.

JIRA #	Client Ticket #	Summary	Type of Issue	RMS Module	Functional Documentation
					This update streamlines data entry by eliminating the need for users to manually look up and re-enter the arrest date and ensures all required data is present for successful record creation.
IA-81293		MICR: Vehicle Property Item should not be written when Loss Type = 0 (None) and there is already Property (loss = None) associated with the offense	Bug/Defect	State Submissions	<p>The Online RMS Incident-Based Reporting for Michigan (MICR) has been updated to correct how Vehicle Property with a status of "None" is reported.</p> <p>Previous Issue: When multiple vehicles were associated with the same offense and all had a status of "None," the system incorrectly reported multiple vehicle property records with that status in the MICR XML.</p> <p>Resolution: The system now ensures that only a single vehicle property record with a status of "None" is reported per offense, in accordance with MICR submission requirements. This correction improves data accuracy and maintains compliance for Michigan RMS clients.</p>
IA-81294		PORT - McLean Evidence Custom Reports - TESTING ISSUES	Release Defects	Property Mgmt	
IA-81296		P2C - Version Config Files	TimeTrack	Admin	
IA-81297	456864	NIBRS Error Code 559 add validation	Bug/Defect	State Submissions	The Online RMS Inc The Online RMS Incident-Based Reporting (NIBRS) has been updated to

JIRA #	Client Ticket #	Summary	Type of Issue	RMS Module	Functional Documentation
		check for Unknown Age, Race and Sex for offense 09C AND 360			<p>include a new validation for NIBRS Error Code 559.</p> <p>Validation Details:</p> <ul style="list-style-type: none"> Applies to offenders involved in NIBRS Offenses: <ul style="list-style-type: none"> 09C – Justifiable Homicide 360 – Failure to Register as a Sex Offender The validation checks that offender Age, Sex, and Race are not marked as Unknown. If any of these values are missing or unknown, the system will prevent submission of the incident for approval. <p>This update ensures compliance with NIBRS requirements and is applied to all RMS clients using NIBRS reporting. Users must provide complete offender demographic information for the applicable offense types before approval.</p> <p>National Incident based reporting (NIBRS) has added a new validation for NIBRS Error Code 559. This validation checks that the offender information on the incident report does not have an unknown age, sex or race for the NIBRS Offenses for Justifiable Homicide (09C) and Failure to Register as a Sex Offender (360). This new validation is applied to all RMS clients and will require the user to complete the offender data with known values prior to submitting the Incident for Approval.</p>

JIRA #	Client Ticket #	Summary	Type of Issue	RMS Module	Functional Documentation
IA-81307		Rules and Validations: RMS displays Custom Field is required when user changes saved value which triggered the validation	Release Defects	Rules and Validations	
IA-81313		PORT - Date of info for warrant needs to be based on warrant date	Enhancement	Warrants	
IA-81319		PORT - Add DCN to Incident People section of Printed Incident report	Enhancement	Incidents	<p>The printed incident report layout has been updated to display the Tracking Number below the person's photo, aligning with the layout used for other key fields.</p> <p>Logic for Tracking Number Display:</p> <ul style="list-style-type: none"> • If a Tracking Number exists in the NIBRS Arrestee table (ARRESTEES), it will be used. • If not found there, the system will check for a Field Arrest on the same incident tied to the same MI Person and use the Tracking Number from that record. • If no Tracking Number is found in either location, the system will omit the field entirely—not displaying the label or a blank value—to preserve clean report formatting. <p>This change improves data visibility while maintaining a</p>

JIRA #	Client Ticket #	Summary	Type of Issue	RMS Module	Functional Documentation
					consistent and professional layout.
IA-81325		PORT - McLean County Evidence Release Report update	Release Defects	Property Mgmt	
IA-81328		Event map: Lookup Address link dialog box displays incorrect header	Release Defects	Incident Mapping	
IA-80850		RMS - Olive Branch Custom Form issue	Bug/Defect	Custom Forms	
IA-80909		RMS - O'Fallon during emulation assigning a supplement Incident Status could not be viewed	Bug/Defect	Emulation	
IA-80910		RMS - O'Fallon Comments do not appear when assigned a supplement	Bug/Defect	Incidents	The Notification should now include the user's comments.
IA-80952		RMS - O'Fallon Issues with assigned a supplement	Bug/Defect	Incidents	When using the incident mega menu -> Assign Supplement. A server-side check is now done to make sure the officer that was selected does not have any open supplements on the incident before creating a new supplement.

IA-81143		RMS - Danville requests name change on Police Department website.	Enhancement	Community Reporting	
IA-81158		Incident State Status 'Failed Validation' should always be displayed as long as one supp has that status	Release Defects	Incidents	"FAILED VALIDATION" will now show as the status if *any* supplement on the incident has this status. Otherwise, the logic will proceed as per IA-70772
IA-81180		Incident: Offender or Victim required validation not working across supps	Bug/Defect	Incidents	Fixed this issue by preventing the user from deleting offenders or victims that were transferred from previous supplements. Also modified the logic behind the swap victim/offender button. It will always display if that person was already victim/offender swapped. This will allow the user to at least swap it back the way it was but will not allow the user to delete the person.
IA-81184		Notification - delete and take action/delete icons and buttons displayed without permission	Bug/Defect	Admin	The permission checks on the view notifications screen should be working now. The Tag import was missing.
IA-81206		Evidence - Request Review Notification TESTING ISSUES	Release Defects	Property Mgmt	
IA-81232		RMS - Vigo Co and Terre Haute can create incidents from a custom form but create	Bug/Defect	Custom Forms	Modified the logic we use to determine if the create incident and create case checkboxes display when reviewing a free standing form. Previously, these checkboxes would display if the free standing form was a public form or the

		incidents is not checked			<p>setting was enabled when configuring the routing for the form. Now it is only controlled by the routing setting (and must be free standing form).</p> <p>Wrote a script to automatically check the create incident and case options in the form routing options for all public freestanding forms.</p>
IA-81268		Case Activity Setup - Usability for Codes	Enhancement	Admin	When adding a new case activity type the code field is now restricted to alphanumeric characters and underscores. Also added some text next to the code label that reads "Restricted to Uppercase Letters, Numbers, and Underscores". If the user tries to type a lower-case letter the system should replace it with a capital letter. In addition, any special characters that are not an underscore should get removed right after they are typed.
IA-81281		RMS - Officer Daily Statistics Report should capture, tally, display the Fuel field in ODL	Enhancement	Reporting	The fuel used now appears below miles driven.
IA-81284		MICR: Add VORs to Victim Age Incident validations	Bug/Defect	State Submissions	
IA-81286		Community Portal - Street Name search should require Name & Type	Enhancement	Admin	Street Type has now been added to a search field for crashes. The values selectable are _a static list_. I put the most common ones up top in no particular order. It's not a required field
IA-81327		Evidence Review Request - TESTING ISSUES #2	Release Defects	Property Mgmt	<p>When sending the evidence review request notification for an evidence ID, the logic is (in order of precedence):</p> <p>1 - Find the 'lead investigator' on an associated case</p>

					<p>2 - Find the 'responsible user' for supplement 0 on the associated incident</p> <p>3 - Find the first custody from user on the evidence chain of custody.</p>
IA-81330		Titan Client Service - Attached Documents and Incident Address City	Release Defects	Interface	<p>The Caliber RMS Crash Interface Client with the Titan Crash Reporting system has been updated to resolve several issues found during test of the interface.</p> <p>The client has been updated to ignore a City Code value of 0000 for the Crash Location. The client has been updated to handle the case where there are no attachments in the Crash JSON message. The client has been updated to log exceptions with the processing and continue processes when an error is encountered instead of stopping the process after an error.</p>
IA-81341		Update Switch to Offender/Victim confirmation messages	Release Defects	Incidents	The warning messages for switching from an offender to a victim and from a victim to an offender have been modified as described in the Jira description.
IA-81347		VA27 Unable to add State offense to Arrest Code	Bug/Defect	Admin	Data issue corrected
IA-81356		PORT - Evidence Release Request report for McLean	Bug/Defect	Property Mgmt	
IA-81357		RMS - Investigate Why Duplicate ARRESTEES records are being created	Bug/Defect	Printing	Issue corrected

IA-81382		Abel Narrative Integration - A Few UX Changes for Pilot	Enhancement	Incidents	
IA-81383		Arrest - hide DL option still prints DL in Identification section	Bug/Defect	Field Arrest	OLN Misc IDs (Drivers licenses) no longer display in the Identification section of the report if the Hide Driver's License # print option is selected.
IA-81393		A Stored Procedure on a printed report is also being used in Java code.	Enhancement	Printing	Created new stored procedure EJS_RPT_PERSON_MIDS_SP in EJS_RPT_PERSON_PK.
IA-81399		PORT - Warrant Upload Fails to Create Received Logs	Bug/Defect	Interface	Warrant log upload processing has been modified to support receiving seconds in the date/time format.

--END--

APPENDIX: SERVICE COMMITMENTS

Caliber Public Safety designs its processes and procedures related to its RMS system based on the service commitments that Caliber Public Safety makes to its business units, the laws and regulations that govern the system and the operational and compliance requirements that Caliber Public Safety has established.

Security, availability, confidentiality, and processing integrity commitments include, but are not limited to, the following:

Security Commitments

- Secure Socket Layer (SSL) FIPS140-2 compliant encryption is used to encrypt the transmission of data with Caliber hosted systems.
- Access to customer data is restricted to Caliber employees and/or subcontractors whose job function requires access.
- RMS Development, operations, and customer service personnel are required to maintain active CJIS certification.
- Systems are subject to vulnerability scanning.

Availability Commitments

- Caliber will maintain a highly available platform (99.9% uptime) that includes redundancy for critical system components except during planned downtime as communicated to users or unplanned downtime caused by circumstances beyond its reasonable control. In practice, Caliber routinely exceeds 99.99% uptime.
- User entity data is backed up daily and replicated to a secondary location.
- User entity data is maintained and stored within the United States.

Confidentiality Commitments

- Upon termination of services, Caliber will return confidential data to customers subject to the terms of the current RMS SaaS agreement.
- Caliber shall protect information designated as confidential from unauthorized access.
- Confidential data shall only be stored within Caliber's company information systems.

Processing Integrity Commitments

- The organization communicates requirements to user entities regarding the information, data, or other specifications necessary to complete processing in alignment with standard business operations.
- Data processing requests are only performed as authorized by the user entity.
- Data shall be stored and maintained in the system with no unauthorized alteration.